

17 Ruskin Road, Old Trafford, Trafford, M16 9GS



JP&Brimelow
ESTATE AGENTS



5 4 2 C

VIDEO TOUR AVAILABLE A deceptively spacious and tastefully extended FIVE BEDROOM, bay fronted semi-detached property occupying a corner plot. Situated on a highly regarded residential tree lined road here in Old Trafford off Kings Road.

Within easy walking distance to the Metrolink station at Firswood & bus routes on Upper Chorlton Road giving you direct access into Media City and City life. Nearby is the centre of Chorlton that provides a lively and vibrant atmosphere and includes street cafes, bars and independent restaurants. Located close by to two Ofsted rated outstanding primary schools.

In brief, the well-planned accommodation comprises; entrance hallway leading to a useful study room and access to two double bedrooms, a two-piece shower room and a separate W.C. there is a through Lounge/living room with bay window to the front aspect and an extended fitted kitchen/breakfast/dining room completes the ground floor with French doors leading out into the rear enclosed garden.

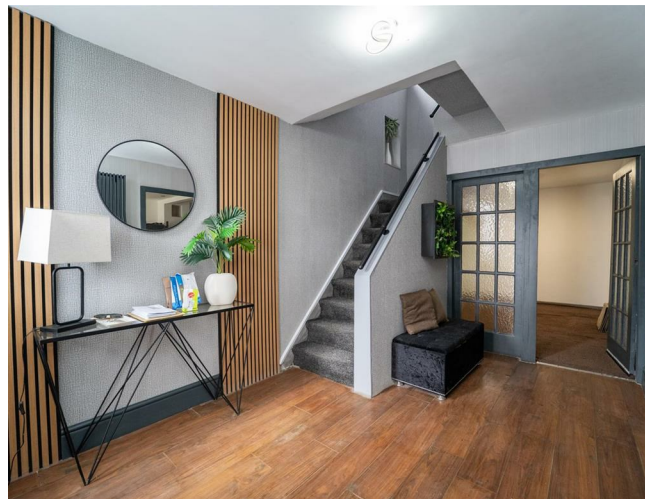
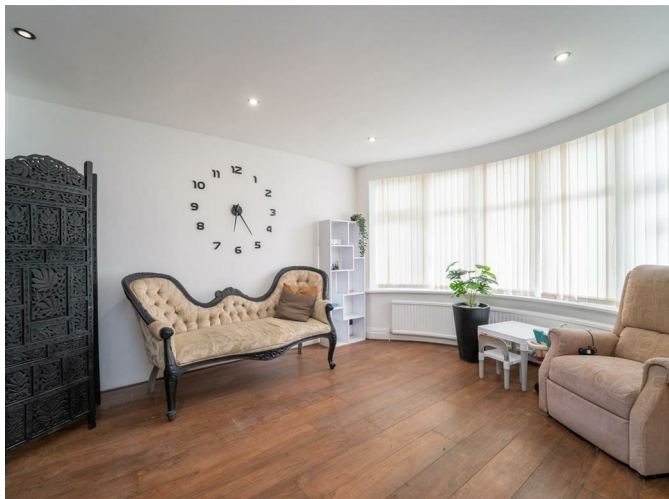
To the first floor reveals a landing leading to three further bedrooms, one benefits from an ensuite shower room and a further three-piece shower room.

Whilst to the second floor there is a useful loft room with built in wardrobes and a useful ensuite shower room.

The property benefits from gas fired central heating, enclosed garden, a driveway providing off road parking and an alarm system.

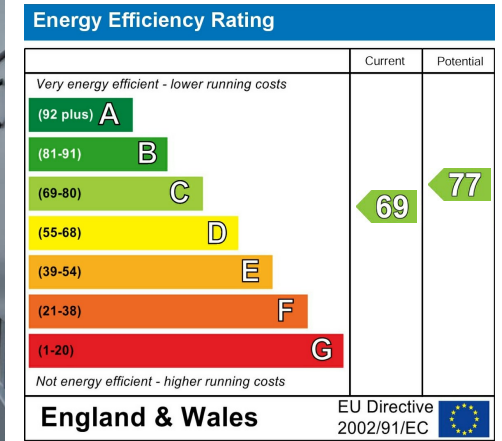
Internal inspection highly recommended due to the location and space available.

£575,000

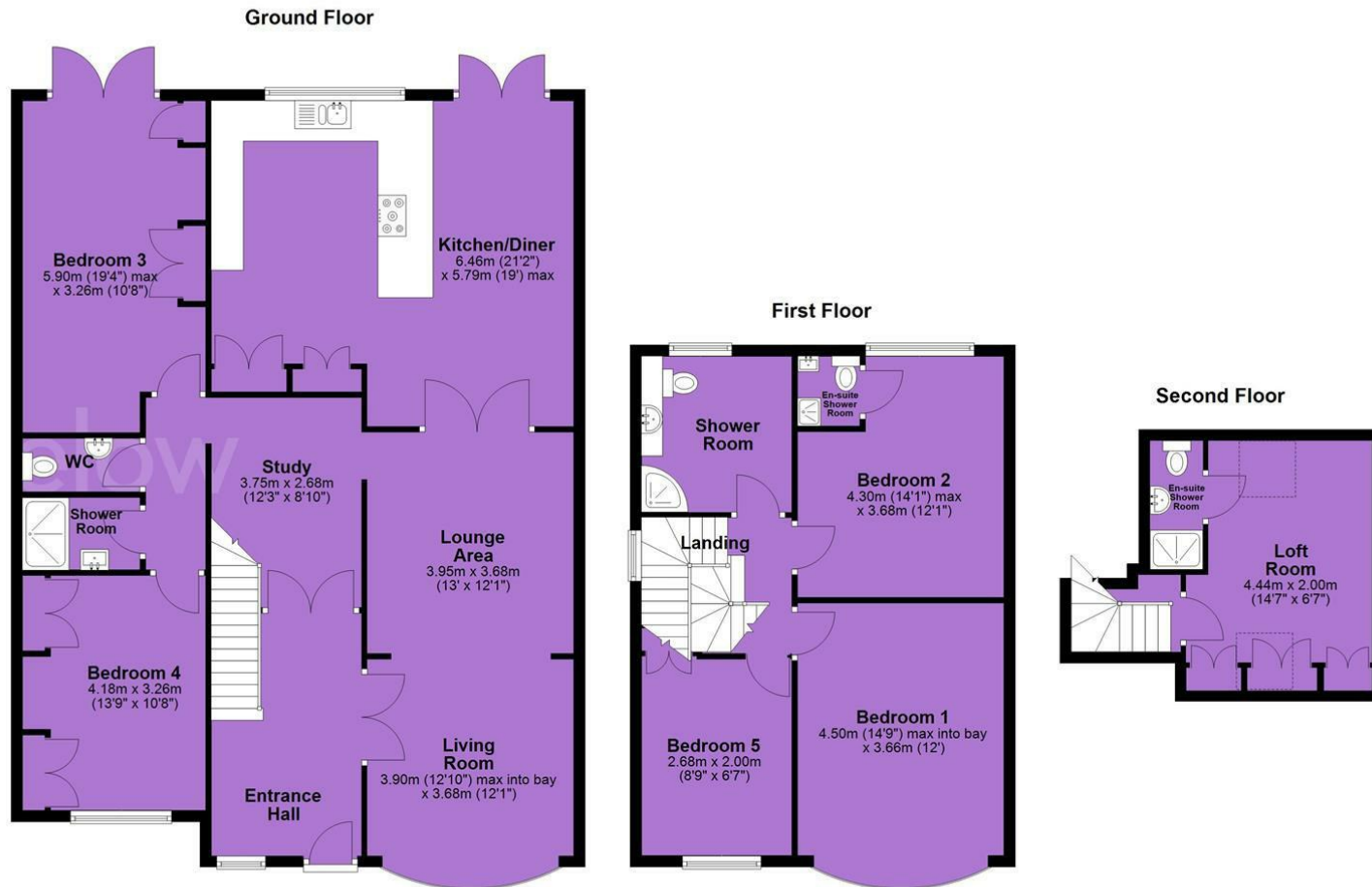




EPC Chart



Tenure: Leasehold Council Tax Band: C



JP & Brimelow Estate Agents Ltd
 430 Barlow Moor Road, Manchester, M21 8AD
 Tel: 0161 8822233
 E: sales@jpbrimelow.co.uk www.jpandbrimelow.co.uk



JP & Brimelow
 ESTATE AGENTS

NOTICE: JP & Brimelow Estate Agents Ltd for themselves and for the vendors or lessors of this property whose agents they are give notice that:

- (i) the particulars are set out as a general outline only for the guidance of intending purchasers or lessees, and do not constitute, nor constitute part of, an offer or contract;
- (ii) all descriptions, dimensions, references to the condition and necessary permissions for use and occupation, and other details are given in good faith and are believed to be correct but any intending purchasers or tenants should not rely on them as statements or representations of fact but must satisfy themselves by inspection or otherwise as to the correctness of each of them;
- (iii) no person in the employment of JP & Brimelow Estate Agents Ltd has any authority to make or give any representation or warranty whatever in relation to this property.

jpandbrimelowestateagents

@jpandbrimelow

